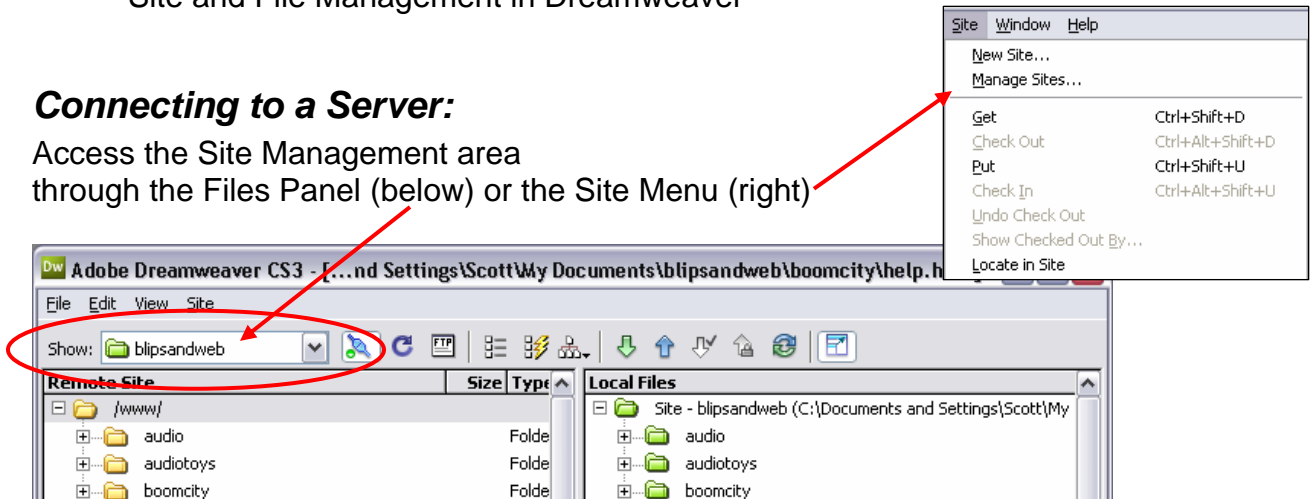


## Web Development:

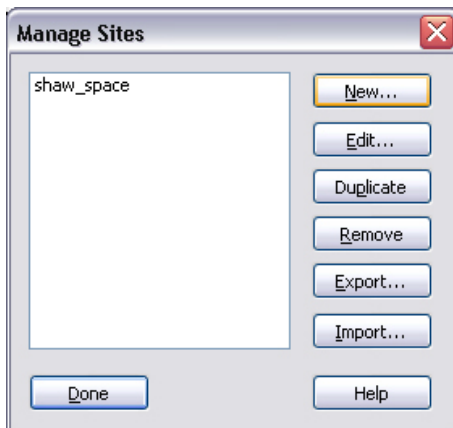
- How to connect Dreamweaver to you hosting server
- Site and File Management in Dreamweaver

### Connecting to a Server:

Access the Site Management area through the Files Panel (below) or the Site Menu (right)





Choose **Manage Sites...** to open the Site Management dialogue box.



In the Site Management window you can Create New Site, Edit, Duplicate, and Remove your sites as well as backup and restore or share using the Export and Import options.


When creating a new site a Wizard will open up if using Basic mode and will walk one through the setup process. A login name and password will be required as well as an FTP web address. These should be provided by the hosting company or web administrator.

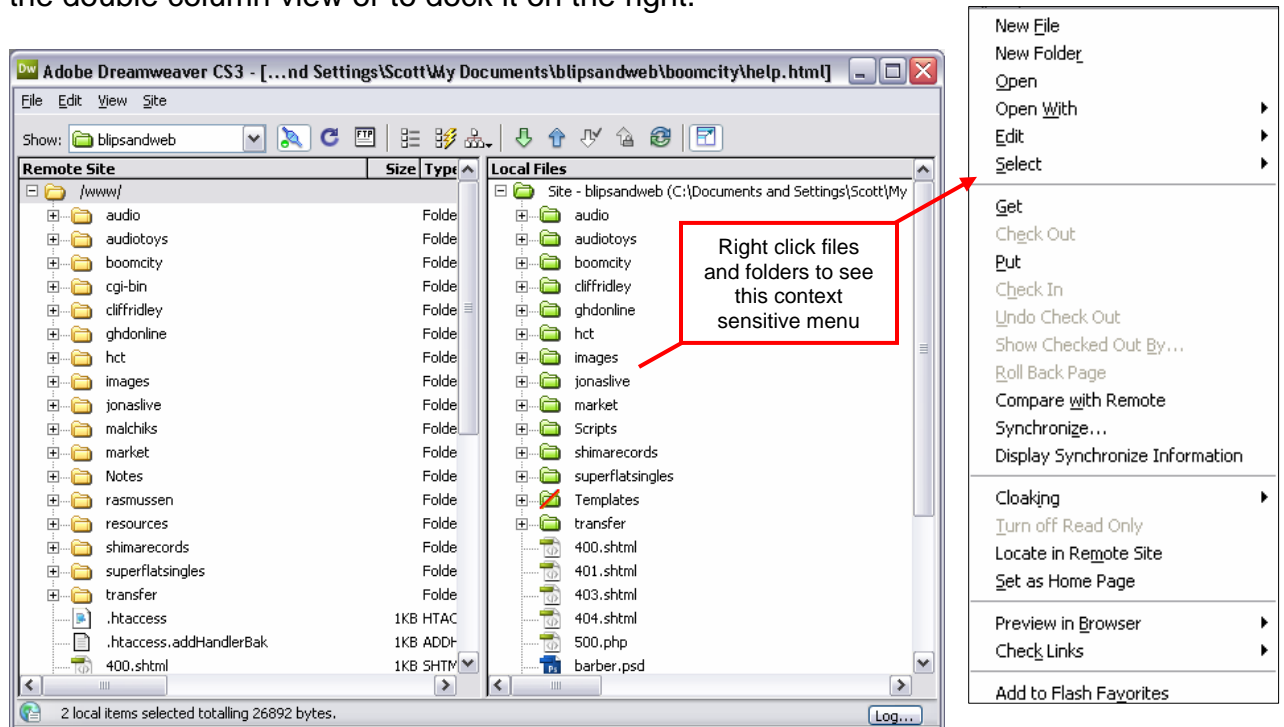
Use  Connect to Remote Host Button to see online files.

Use  Refresh to update your view of files on the server.

Use  Get and Put buttons to Download or Upload files.

## File Management

In Dreamweaver File Management is achieved through it's own file system. It is best practice to Move and rename files in the Files Panel. The files panel can be accessed through the Window Menu or found as a docked panel on the right of the screen, or full size as seen below. Use the full size toggle button  to see the double column view or to dock it on the right.



To edit files a very direct system is to Drag and Drop from one column to the other to Upload (Put) or Download (Get) them from the server. Right clicking on files in the Panels also shows various options to edit and Get and Put.

## Design Notes

If Design Notes are activated through the Site Management advanced tab then each file has the potential to contain notes regarding the file. In Site Management one can choose to have the notes uploaded (collaborative teams can then work with the notes communally). These notes can contain any string of text, dates, version information, or even allow you to add your own custom fields to record your own data. Right-click a file to add design notes.

## Cloaking

If Cloaking is activated through the Site Management Advanced tab then users can Right-click files and Cloak them. Cloaked files will not be uploaded to the server. You can cloak entire file types (PSD, FLA) through the Site Management.